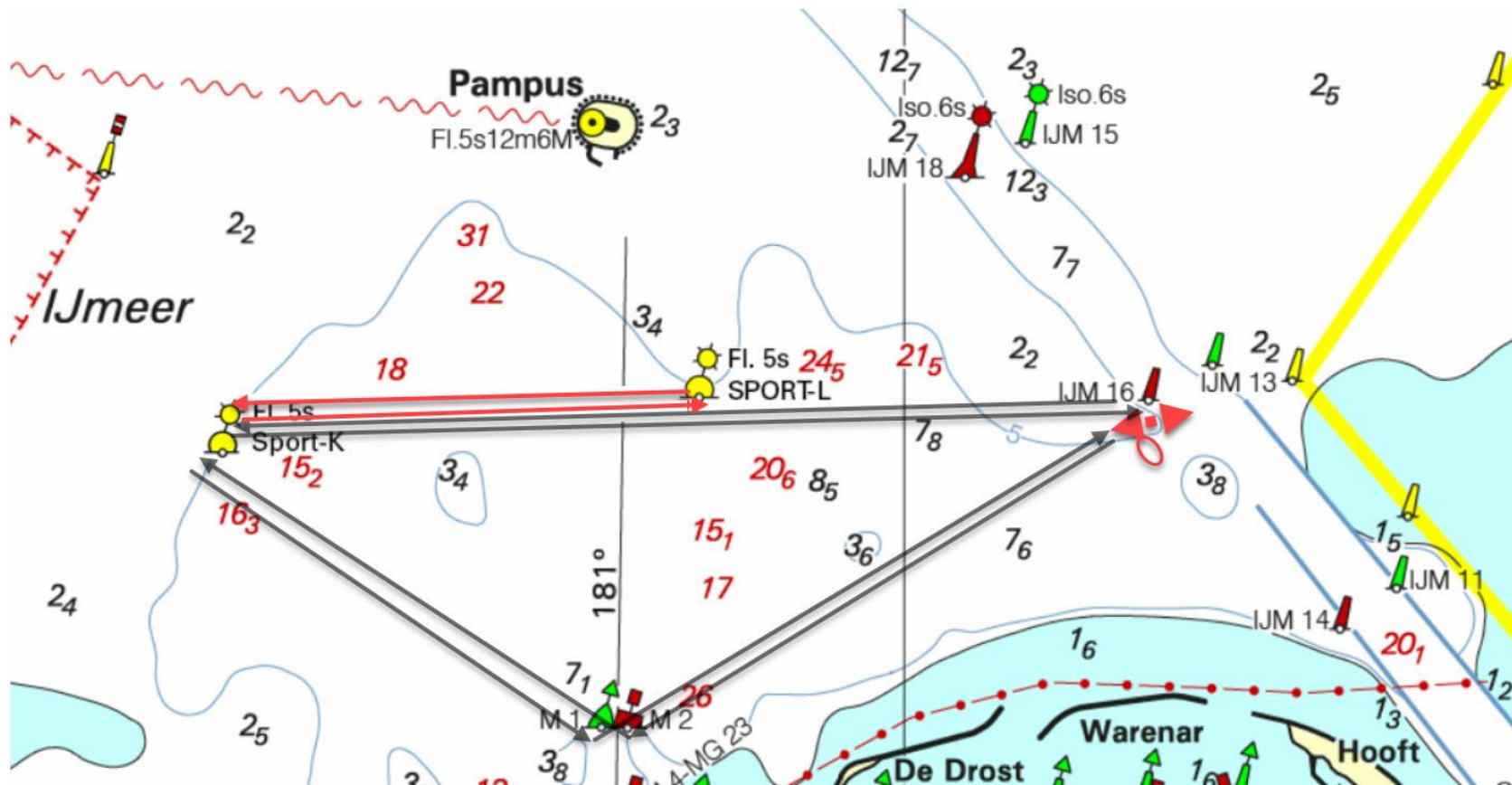


**Baan 1** wind: oost west kort (7,4 en 5,8 Nm)

A: START - M2 sb - Sport-K sb - IJM16 bb - Sport-K bb - M1 bb - FINISH

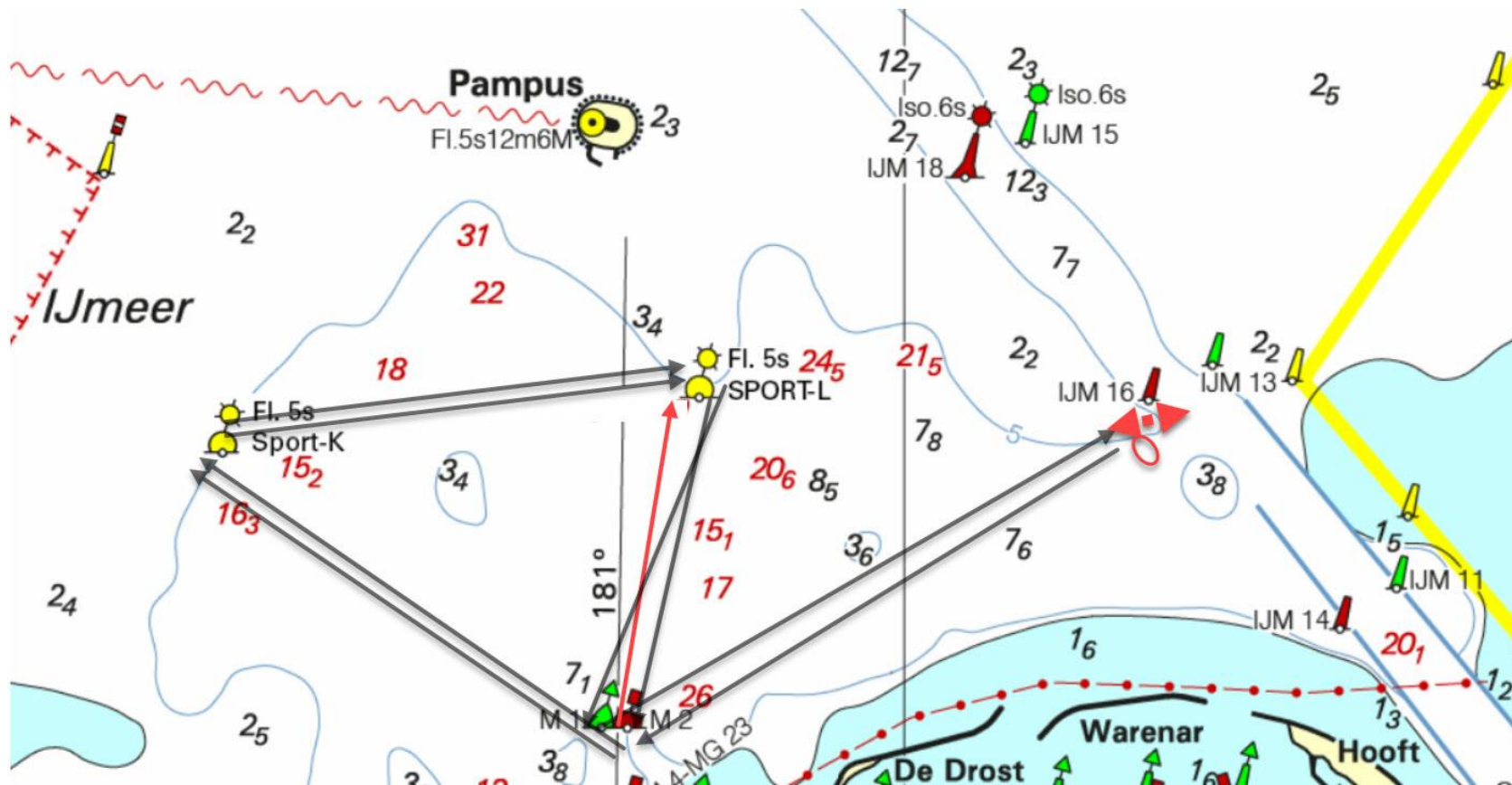
B: START - M2 sb - Sport-K sb - Sport-L bb - Sport-K bb - M1 bb - FINISH



**Baan 2** wind: zuid (7.3 en 6 Nm)

A: START - M2 sb - Sport-K sb - Sport-L sb - M2 sb - Sport-K sb - Sport-L sb - M1 bb - FINISH

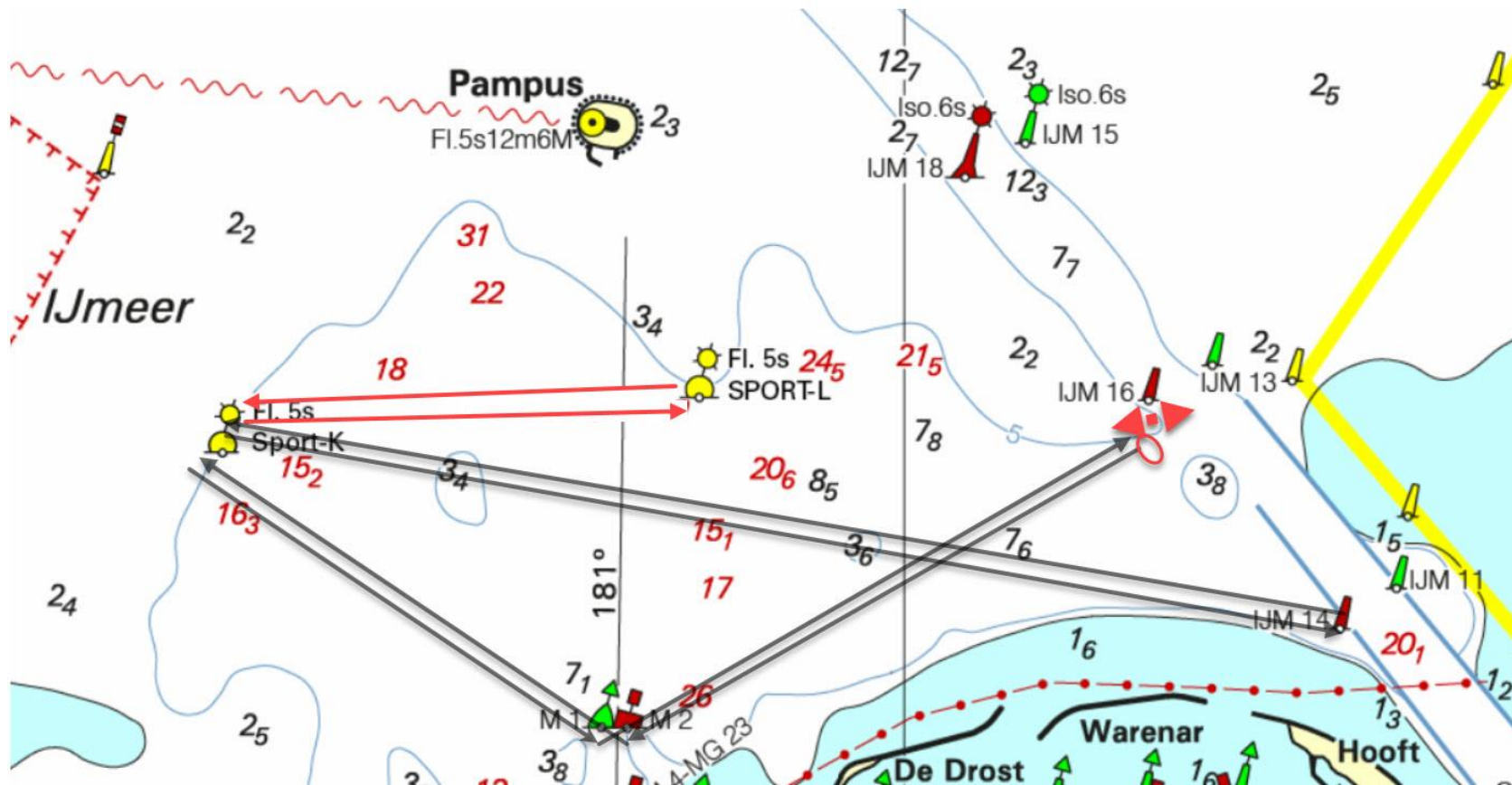
B: START - M2 sb - Sport-K sb - Sport-L sb - M2 sb - Sport-L sb - M1 bb - FINISH



**Baan 3** wind: oost en west (8,3 en 5,9 Nm)

A: START - M2 sb - Sport-K sb - IJM14bb - Sport-K bb - M1 bb - FINISH

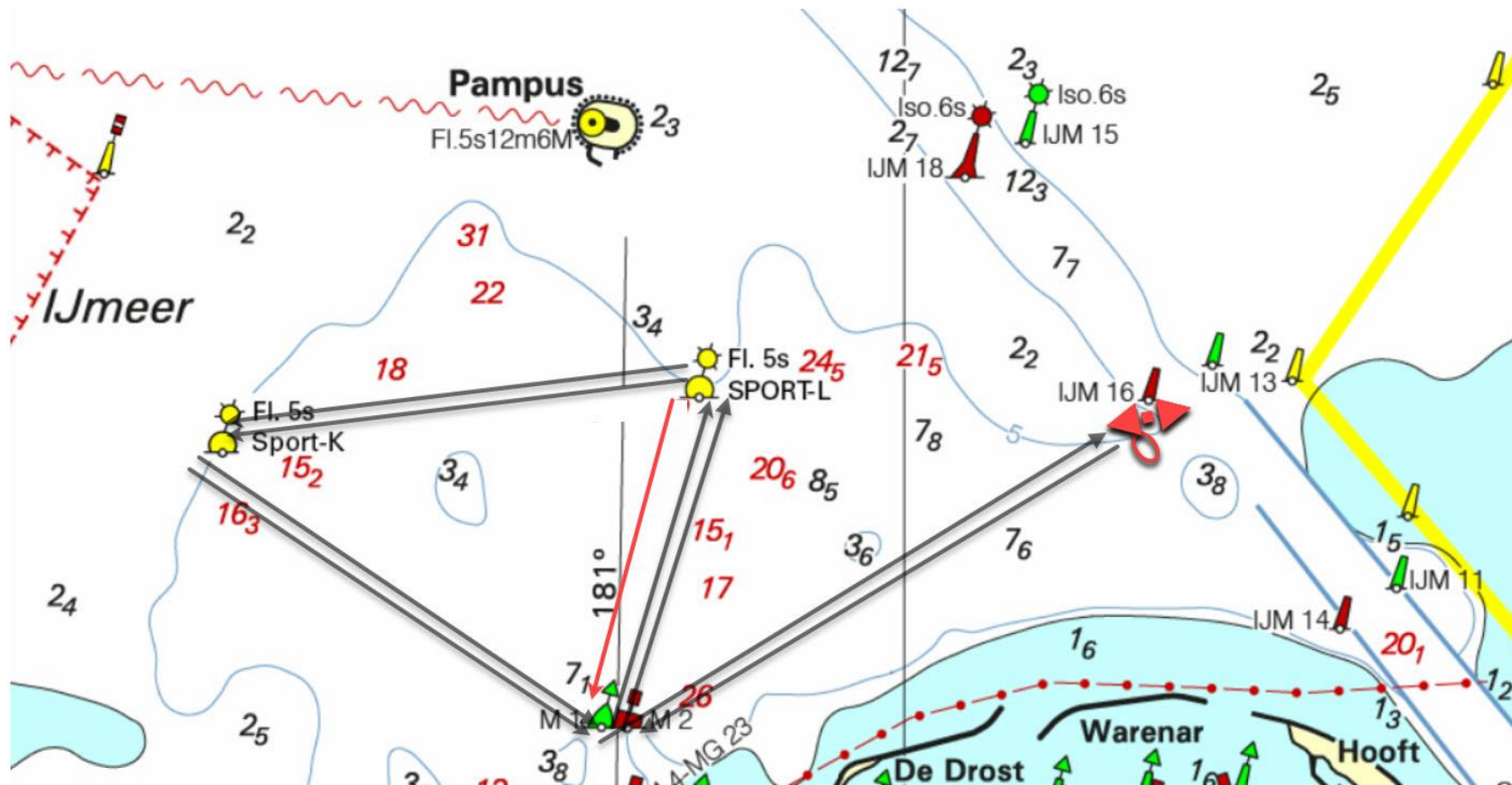
B: START - M2 sb - Sport-K sb - Sport-L bb - Sport-K bb - M1 bb - FINISH



**Baan 4** wind: noord (7,3 en 6,1 Nm)

A: START - M2 sb - Sport-L bb - Sport-K bb - M1 bb - Sport-L bb - Sport-K bb - M1 bb - FINISH

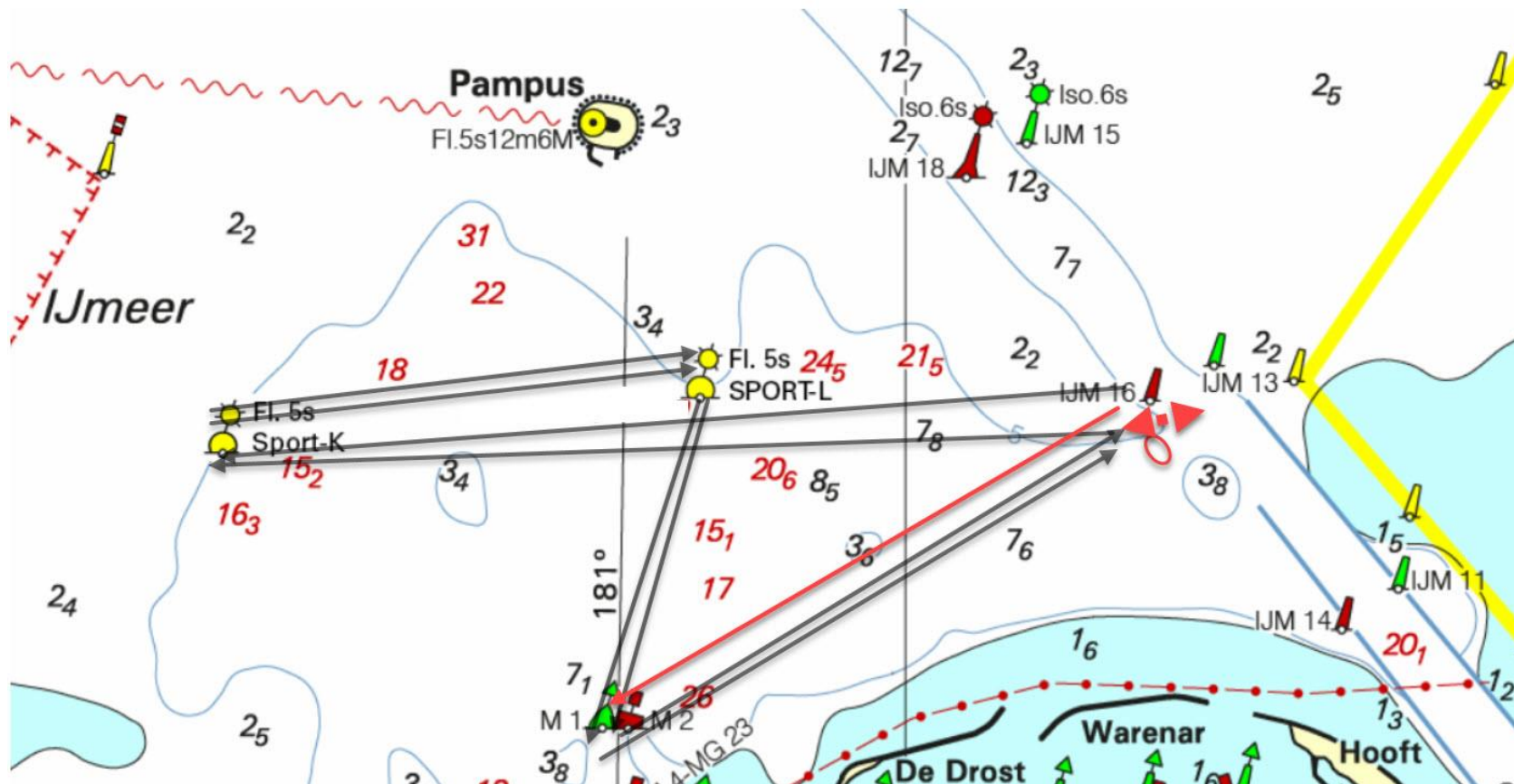
B: START - M2 sb - Sport-L bb - Sport-K bb - M1 bb - Sport-L bb - M1 bb - FINISH



**Baan 5** wind: noord west, zuid oost (8,6 en 6,5 Nm)

A: START - Sport-K sb - Sport-L sb - M2 bb - IJM16 bb - Sport-K sb - Sport-L sb - M1 bb - FINISH

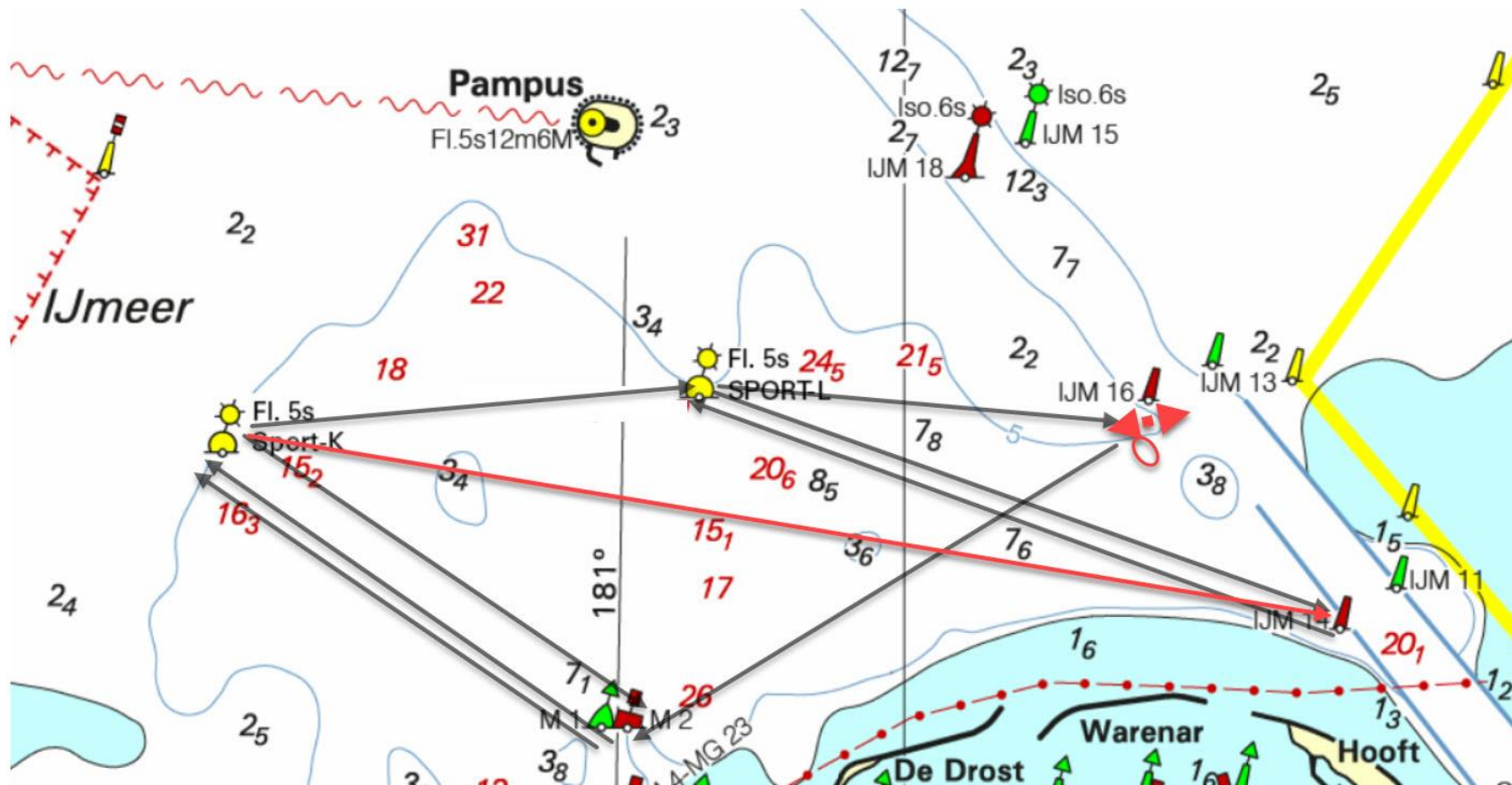
B: START - Sport-K sb - Sport-L sb - M2 bb - IJM16 bb - M1 bb - FINISH



**Baan 6** wind: noord west, zuid oost (8 en 6,2 Nm)

A: START - M2 sb - Sport-K sb - M2 sb - Sport-K sb - Sport-L sb - IJM14 sb- Sport-L sb - FINISH

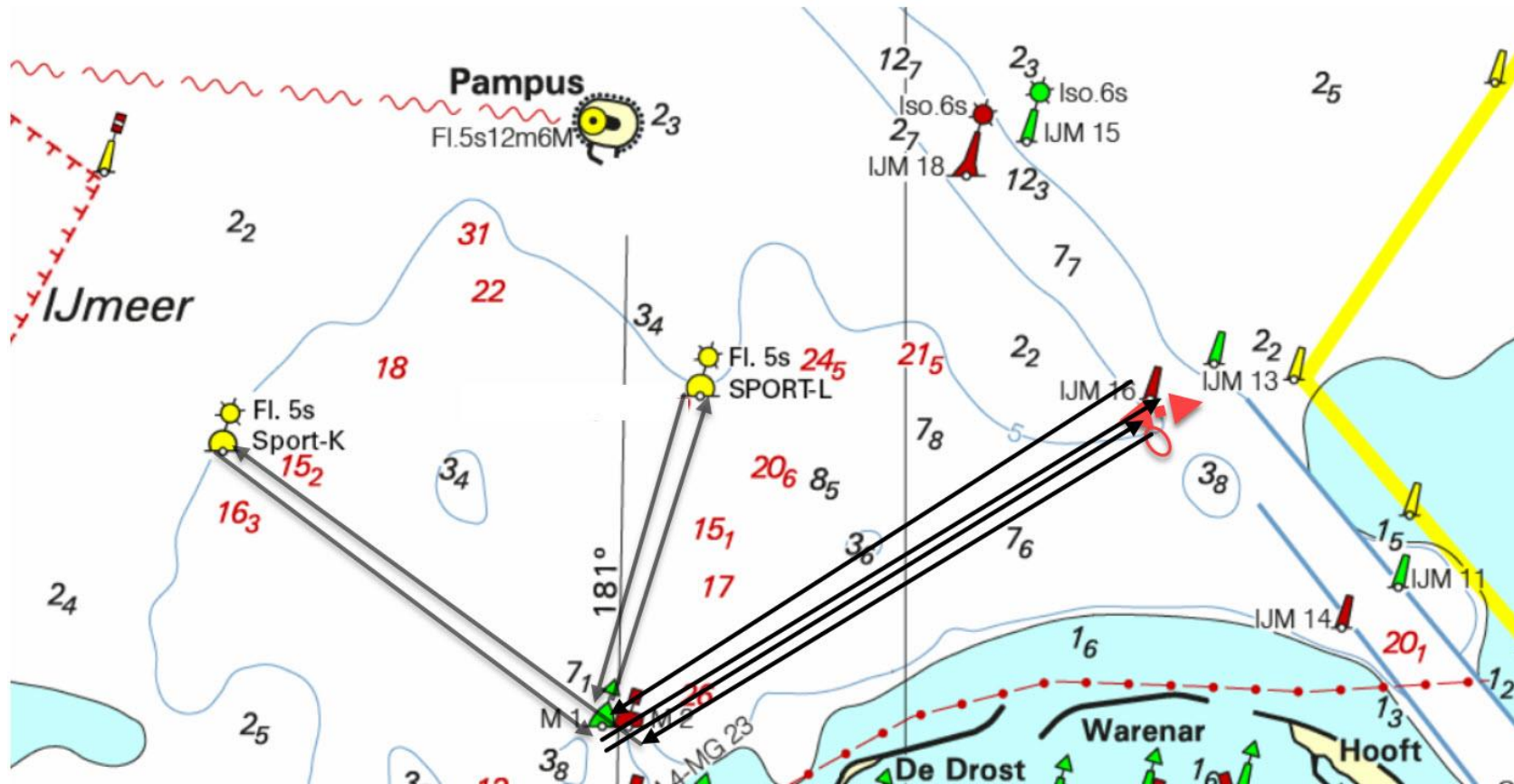
B: START - M2 sb - Sport-K sb - IJM14 sb- Sport-L sb - FINISH



**Baan 7** wind: zuid west, noord oost (7,8 en 5,3 Nm)

A: START - M2 sb - Sport-K bb - M1 bb - Sport-L bb - M1 bb - IJM16 bb - M1 bb - FINISH

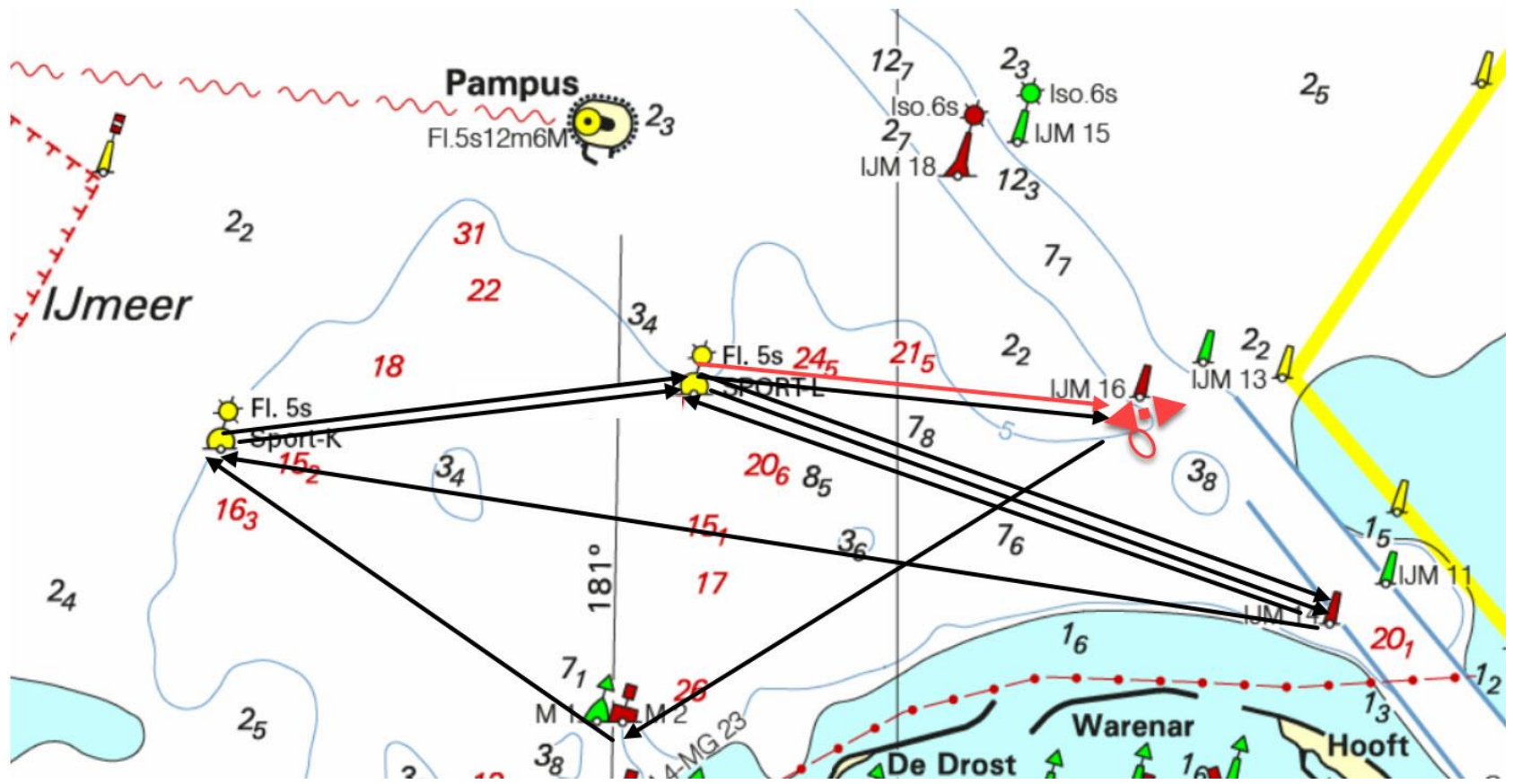
B: START - M2 sb - Sport-K bb - M1 bb - Sport-L bb - M1 bb - FINISH



**Baan 8** wind: oost - zuid oost, west - zuid west (10,4 en 7.9 Nm)

A: START - M2 sb - Sport-K sb - Sport-L sb - IJM14 sb- Sport-K sb - Sport-L sb - IJM14 sb - Sport-L sb - FINISH

B: START - M2 sb - Sport-K sb - Sport-L sb - IJM14 sb- Sport-K sb - Sport-L sb - FINISH

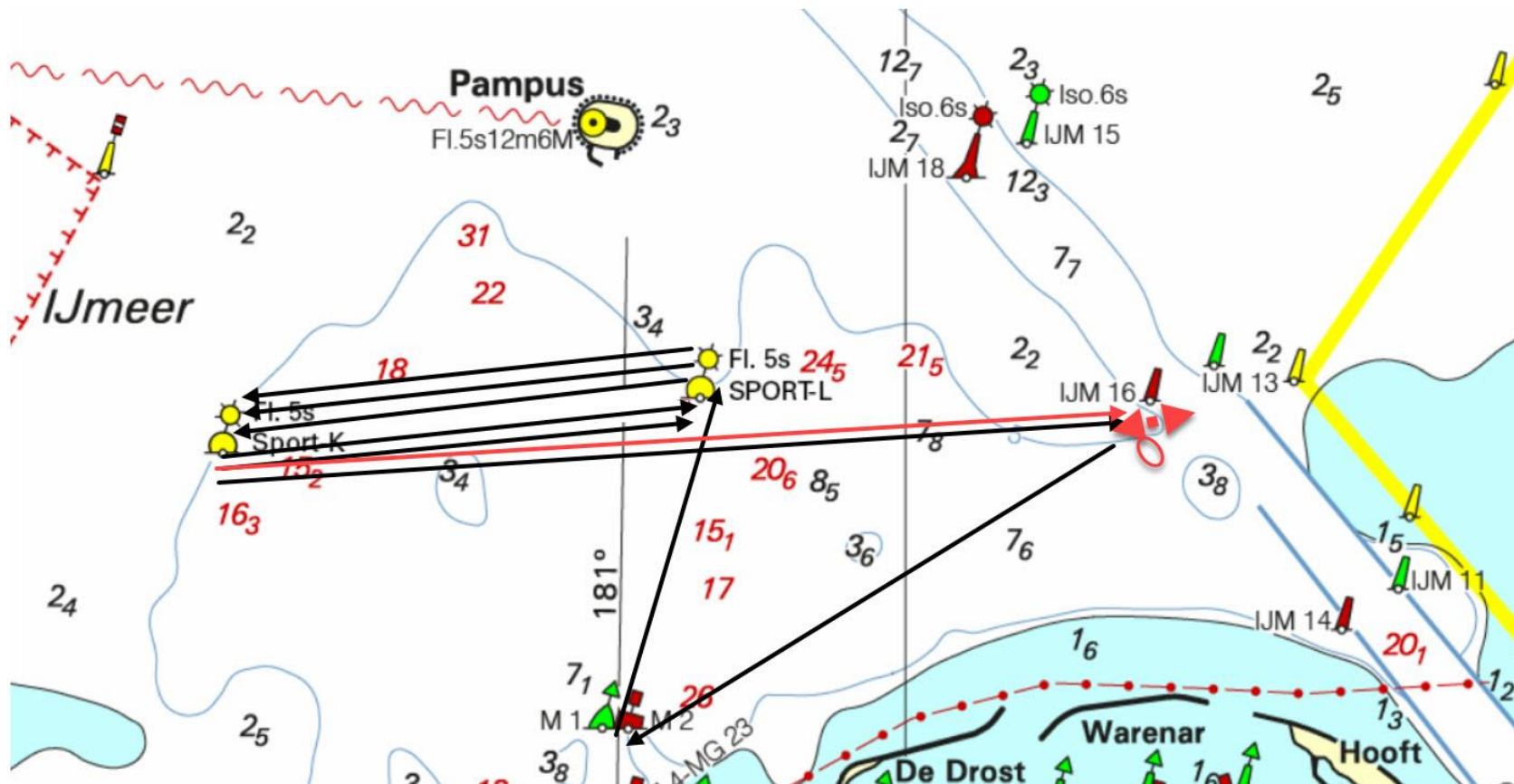




**Baan 9** wind: oost, west (7,8 en 6 Nm)

A: START - M2 sb - Sport-L bb - Sport-K bb - Sport-L bb - Sport-K bb - Sport-L bb - Sport-K bb - FINISH

B: START - M2 sb - Sport-L bb - Sport-K bb - Sport-L bb - Sport-K bb - FINISH



**Baan 10** wind: noord , zuid (7,4 en 6,1 Nm)

A: START - M2 sb - Sport-K sb - Sport-L sb - M2 sb - Sport-L sb - M2 sb - Sport-L sb - M2 sb - Sport-L sb - FINISH

B: START - M2 sb - Sport-K sb - Sport-L sb - M2 sb - Sport-L sb - M1 bb - FINISH

