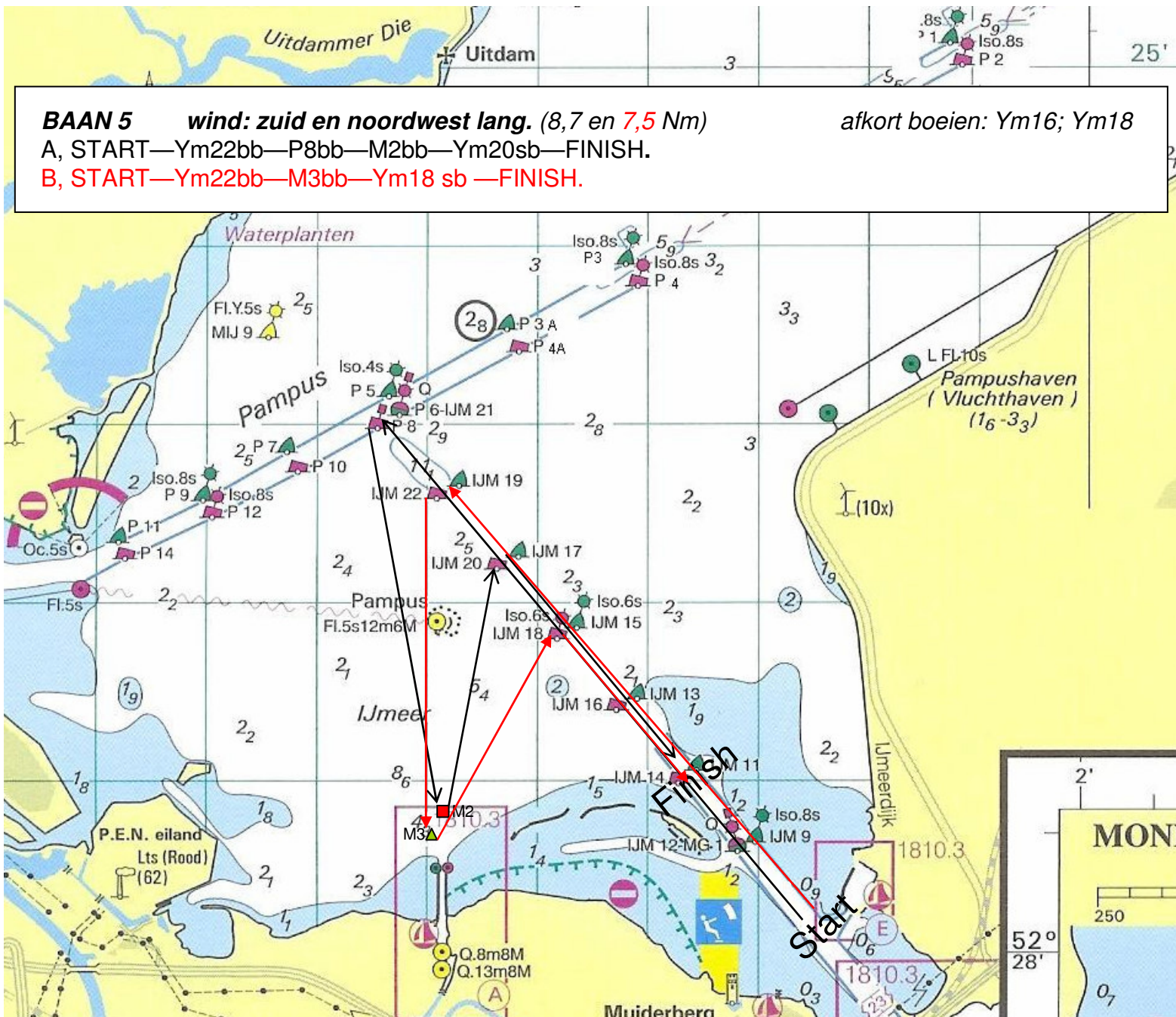


BAAN 3 wind: noord en zuidoost lang. (8,7 en 7,5 Nm) afkort boeien: Ym16, Ym18, Ym20, Ym22
 A, START—Ym18bb—Ym20bb—M2sb—P8sb—FINISH.
 B, START—Ym18bb—M3sb—Ym22sb—FINISH.

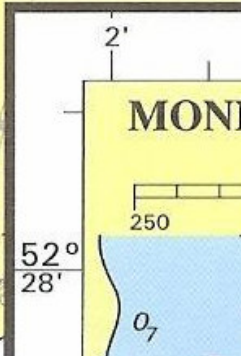


BAAN 4 wind: zuid en noordwest kort . (7,9 en 6,6 Nm) afkort boeien: Ym16; Ym18
 A, START—Ym20bb—Ym22bb—Pampus bb—M2bb—Ym20sb—FINISH.
 B, START—Ym20bb—M3bb—Ym18sb—FINISH.



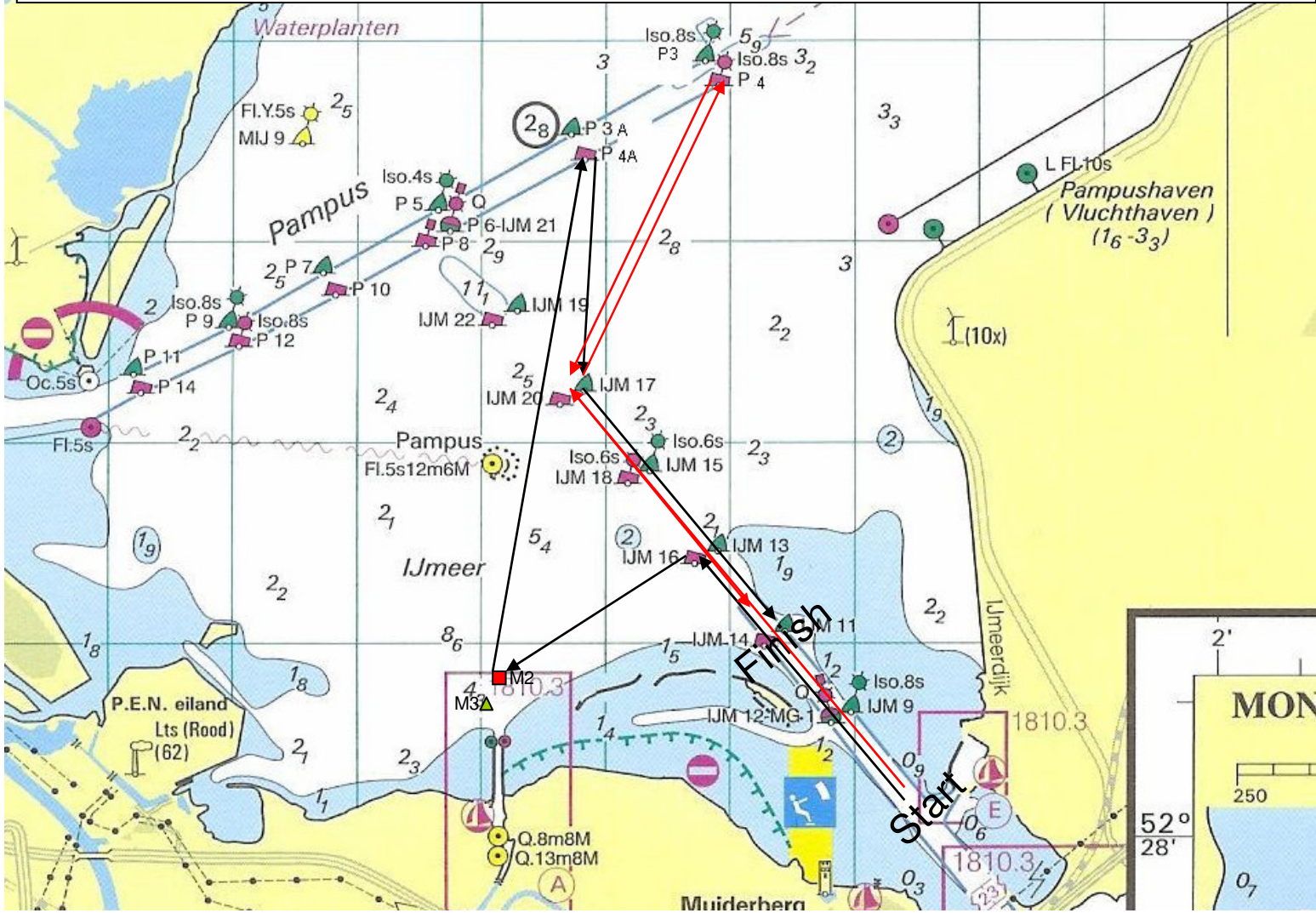


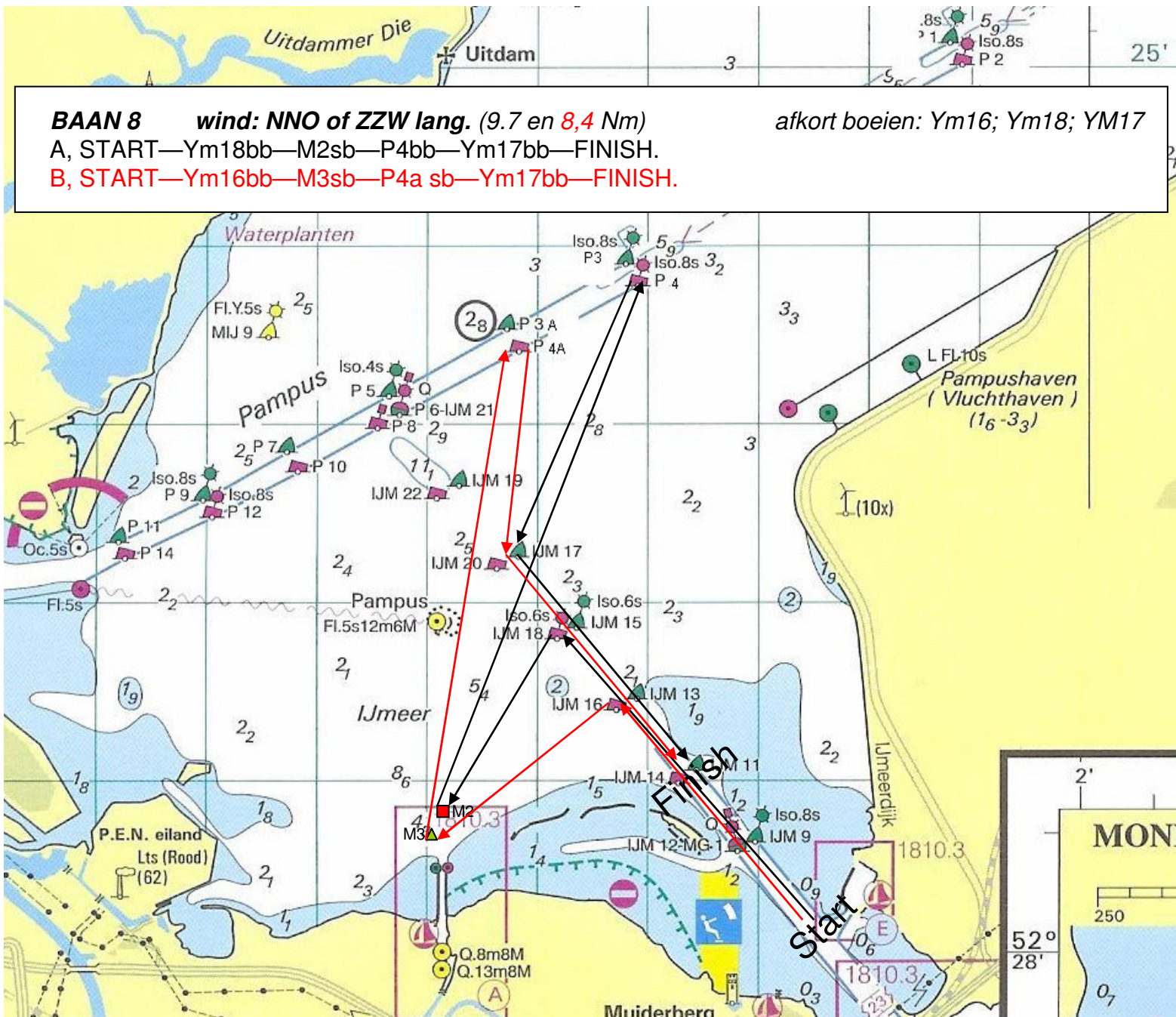
BAAN 5 wind: zuid en noordwest lang. (8,7 en 7,5 Nm) afkort boeien: Ym16; Ym18
 A, START—Ym22bb—P8bb—M2bb—Ym20sb—FINISH.
 B, START—Ym22bb—M3bb—Ym18 sb —FINISH.

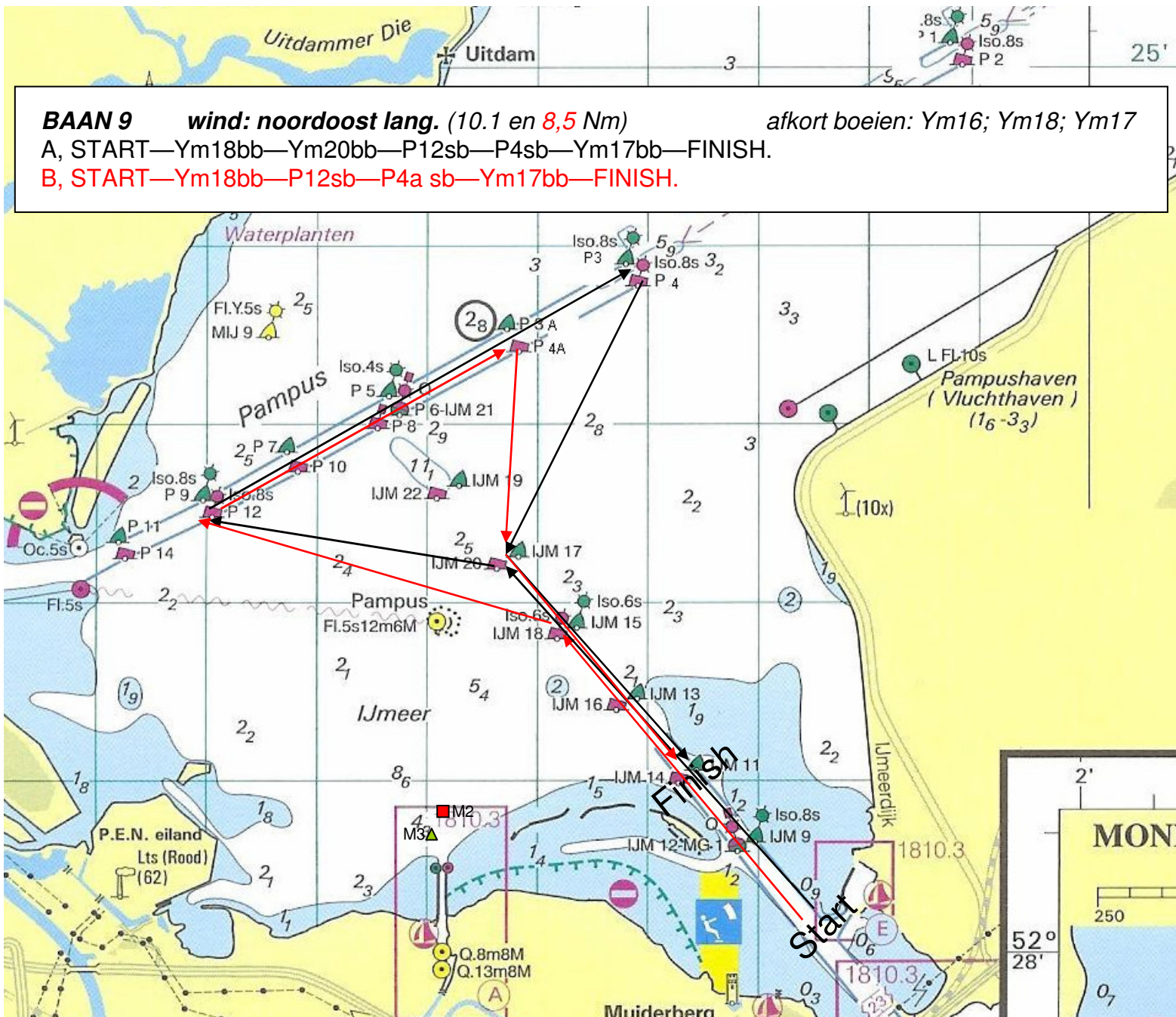




BAAN 7 *wind: NNO of ZZW kort. (8.1 en 7,5 Nm)* *afkort boeien: Ym16; YM18; Ym17*
 A. START—Ym16bb—M2sb—P4a sb—Ym17bb—FINISH.
 B. START—Ym17sb—P4 bb—Ym17bb—FINISH.







BAAN 9 wind: *noordoost lang.* (10.1 en 8,5 Nm) afkort boeien: Ym16; Ym18; Ym17
 A, START—Ym18bb—Ym20bb—P12sb—P4sb—Ym17bb—FINISH.
 B, START—Ym18bb—P12sb—P4a sb—Ym17bb—FINISH.

